



City Year Boston: The Need, The Model, The Impact



The Challenge

Nationally: 1.2 million students drop out of school every year

High school dropouts are

3 times



more likely than college graduates to be unemployed and

8 times



more likely to be in jail or prison than high school graduates.

\$52,671

average income of a college graduate

\$17,299

average income of a high school dropout

In Massachusetts:

The gap between the cost of a student who drops out and the contribution of a high school graduate is

\$437,000

per student.

We Know Which Students Will Dropout

Groundbreaking research conducted by Johns Hopkins University identifies which students are at risk of dropping out based on:



Attendance – less than 80%

Behavior –suspensions, time out of school

Course Performance –failing English or math

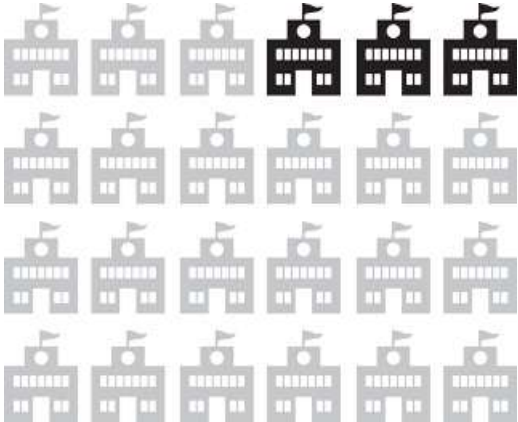
Sixth grade students with just one of these indicators have a

10% to 20% chance of graduating from high school on time.

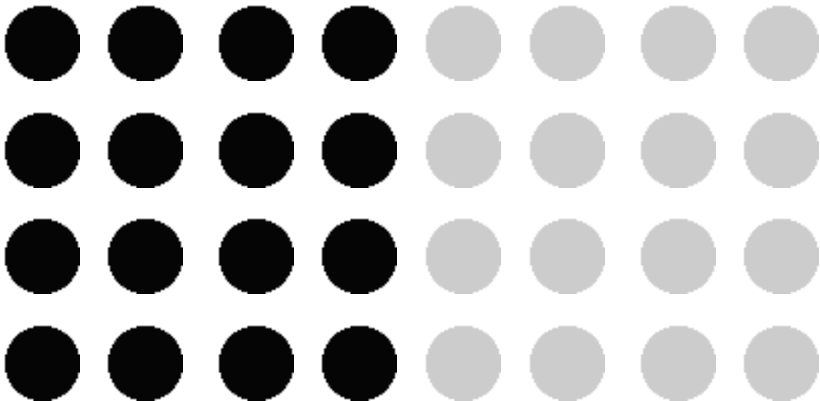
We Know Where They Are Located

The Problem is Concentrated

12%
of the nation's
high schools



produce
50% of the nation's dropouts



In Boston

In 2009, Boston Public Schools launched the **Acceleration Agenda**, a five-year strategic plan to rapidly improve the achievement of all students.

Guided by the Agenda, **Boston Public Schools has achieved the lowest dropout rate in decades.**

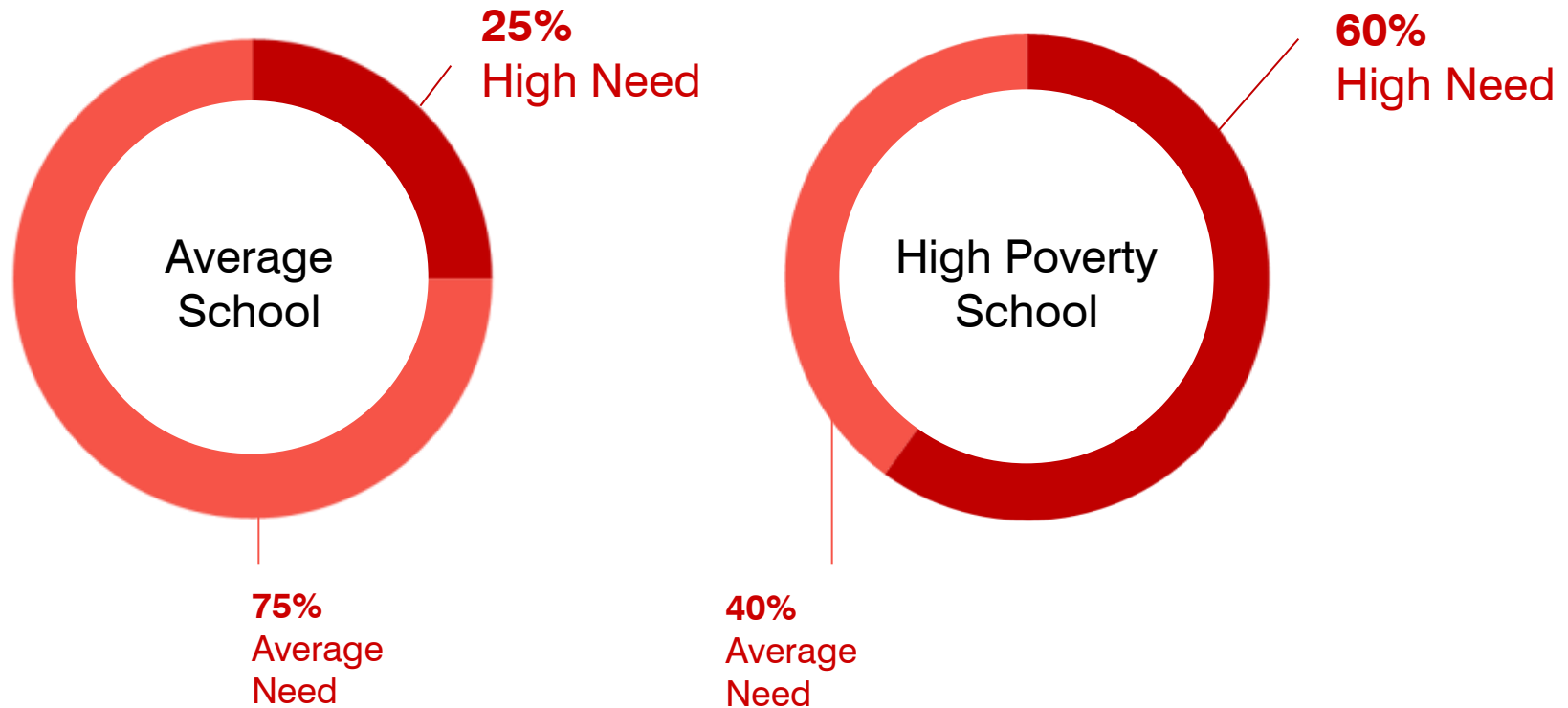
However, even with this great progress, **there is still work to be done:**

- **47%** of Boston students in grades 3- 9 are off-track in at least one of the ABC Indicators
- **1,100** students dropped out last year
- **Six** high schools generate **half** of the dropouts

A Human Capital Solution is Needed

High poverty schools enroll larger populations of students with more comprehensive needs.

In addition to great teachers and leaders, a Human Capital Strategy is required to address this challenge:
A second set of full-time, highly trained and caring adults in schools committed to change.



Analysis based on 2009-2010 ISAT/PSAE scores and demographic data from the Illinois State Board of Education for all schools in the state of IL. High poverty schools represent the 15% of schools with the highest percentage of low income students. Average school defined as the median percent proficiency in reading and math.

City Year: Helping Students and Schools Succeed

Corps members serve full-time, year-round in schools as **tutors**, **mentors** and **role models**, reaching more than 7,300 students in 14 Boston schools.

Diverse

Near Peer

Full-Time

Team-Based



Competitively Selected * Highly Trained * Fully Supported

City Year Service Model

Levels of Impact

Individualized Support

- One-on-one or small groups
- Academic and socio-emotional

Classroom Support

- Enables differentiated instruction by teachers
- Reinforces classroom learning in class and after school

Whole School Support

- School climate, attendance, positive behavior and enrichment programs
- Family engagement

- ✓ Improved student **Attendance**, **Behavior** and **Course Performance** (English & math)
- ✓ Improved on-time grade progression
- ✓ Improved student mindset and skills for school achievement and civic participation

A Day in the Life of City Year

8:00 am Travel with the team to school



8:30 am Greet students for a positive and energetic start to the school day



9:00 am One-on-one math tutoring



10:00 am Reading comprehension and writing review



11:00 am Team-building puzzle activities



12:00 pm Lunch with mentor group



1:00 pm Small group literacy lesson



2:00 pm Meeting with principal to plan playground renovation



3:00 pm After-school homework help and test prep



5:30 pm Give parents flyer for upcoming family book fair



6:00 pm Break for the day



Evidence of Impact in Boston

- 15,000 hours of learning time recovered through attendance support initiatives
- 75% of students in grades 7 – 9 previously failing English moved to passing
- 91% of elementary school students tutored by City Year improved their score on literacy assessments¹
- 58% decrease in students off track in attendance from the start of year to the end of year²
- 17% of elementary school students who were off-track or sliding in literacy at the start of the year were back on-track at the end of the year³

Supporting Teachers and Principals

Principals⁴

I am satisfied/very satisfied with the overall experience of working with City Year

100%

Corps members served as positive role models

100%

Teachers⁵

My corps members helped improve students' motivation to learn

86%

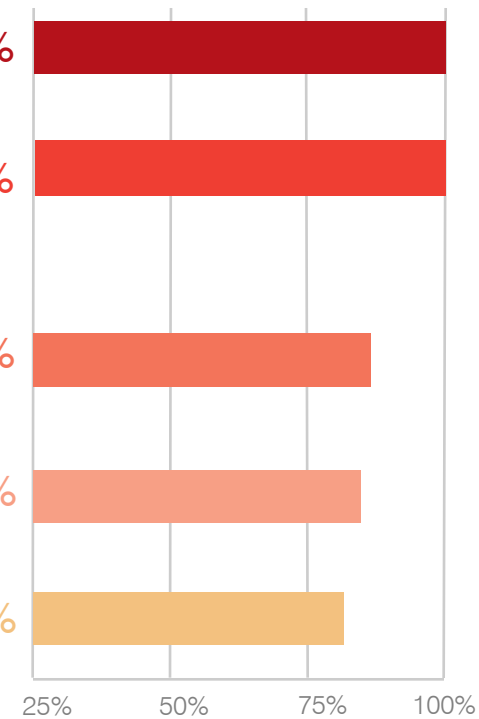
My corps member helped differentiate instruction

84%

My corps members helped improve student English/language arts performance

81%

Agree/Strongly Agree



Supporting Evidence-Based School Improvement Strategies

Empowers Data-Informed Student Interventions



- Coordinated, school-wide intervention strategy
- Focused supports for off-track students
- Refer highest-need students to outside support

Improves Student Learning



- Consistently high expectations
- Full day continuity of support

Supports Teacher Effectiveness



- Presence allows for differentiated instruction
- Reinforces teacher curricula and instruction

Expands/Optimizes Learning Time



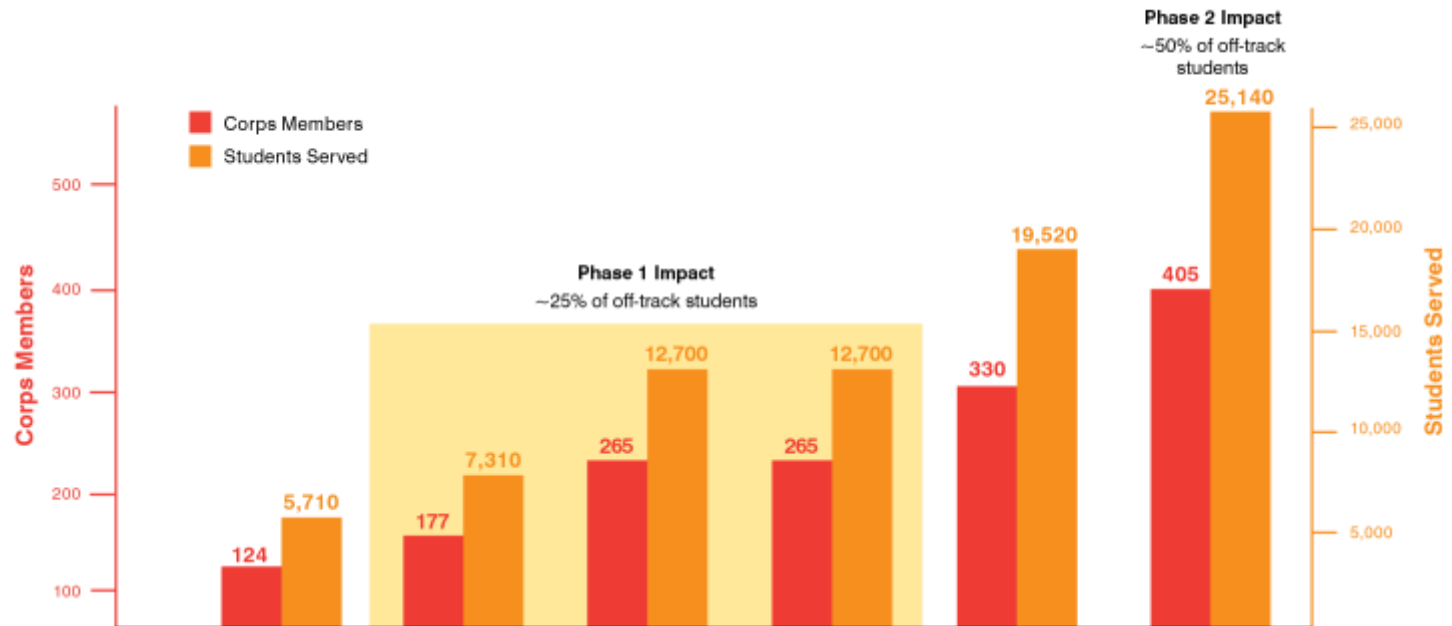
- Just-in-time tutoring
- Before and after school
- Focus in the classroom

Promotes Student Engagement and Attendance



- Promote school-wide climate of achievement
- Near-peer mentors
- Family Engagement

Scaling to Reach the Majority of Boston's Off-Track Students



	2010-11	2011-12	2012-13	2013-14	2014-15	2015-16
Off-Track Students Served	1,200	1,900	3,075	3,075	4,500	5,685
High Schools Served	1	2	3	3	4	6
Feeder Schools Served	9	12	20	20	25	31
Total Schools Served	10	13	23	23	29	37

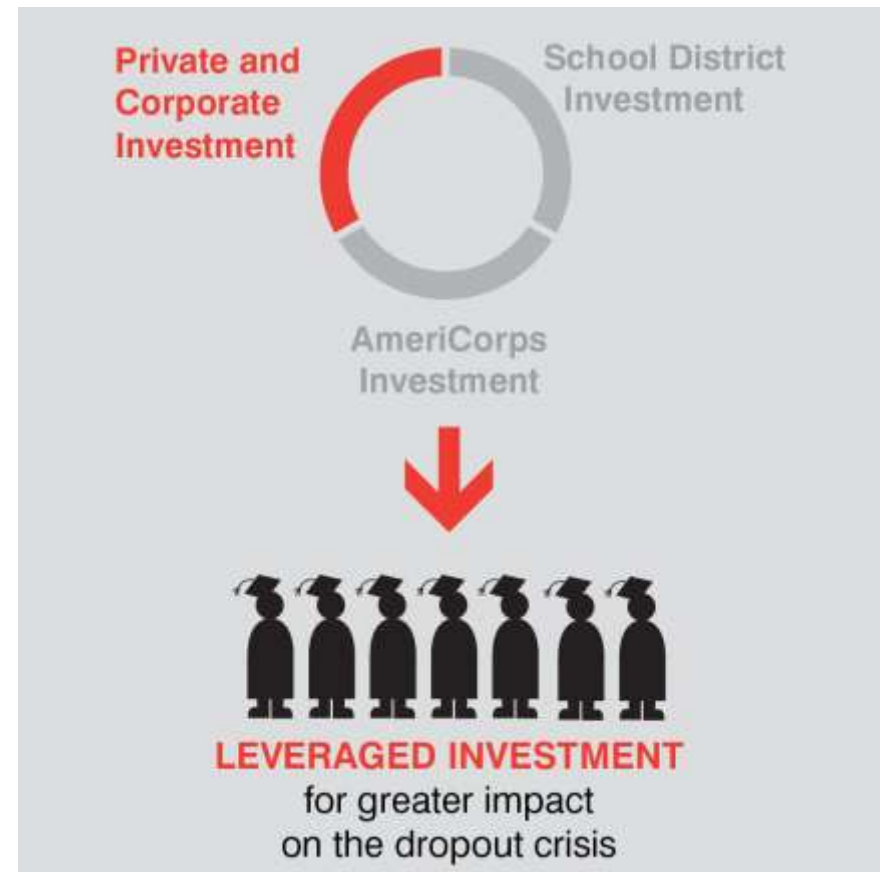
- Current: 177 corps members in 14 schools in 2011 = reaching 10% of off-track students in grades 3 - 9
- Phase 1: 265 corps members in 23 schools in 2012 = 25%
- Phase 2: 405 corps members in 37 schools in 2015 = 50%

Highly Leveraged Investment

Funding for City Year is highly leveraged.

Each source is matched 2:1 –

- Federal AmeriCorps
- Boston Public Schools
- Private and Corporate



For more information on how to get involved and support City Year, please contact:

Donna Quirk, Individual Giving Officer

617.927.2381

dquirk@cityyear.org

Matthew Parks, Corporate Relations Manager

617.927.2309

mparks@cityyear.org

Or visit www.cityyear.org/boston

